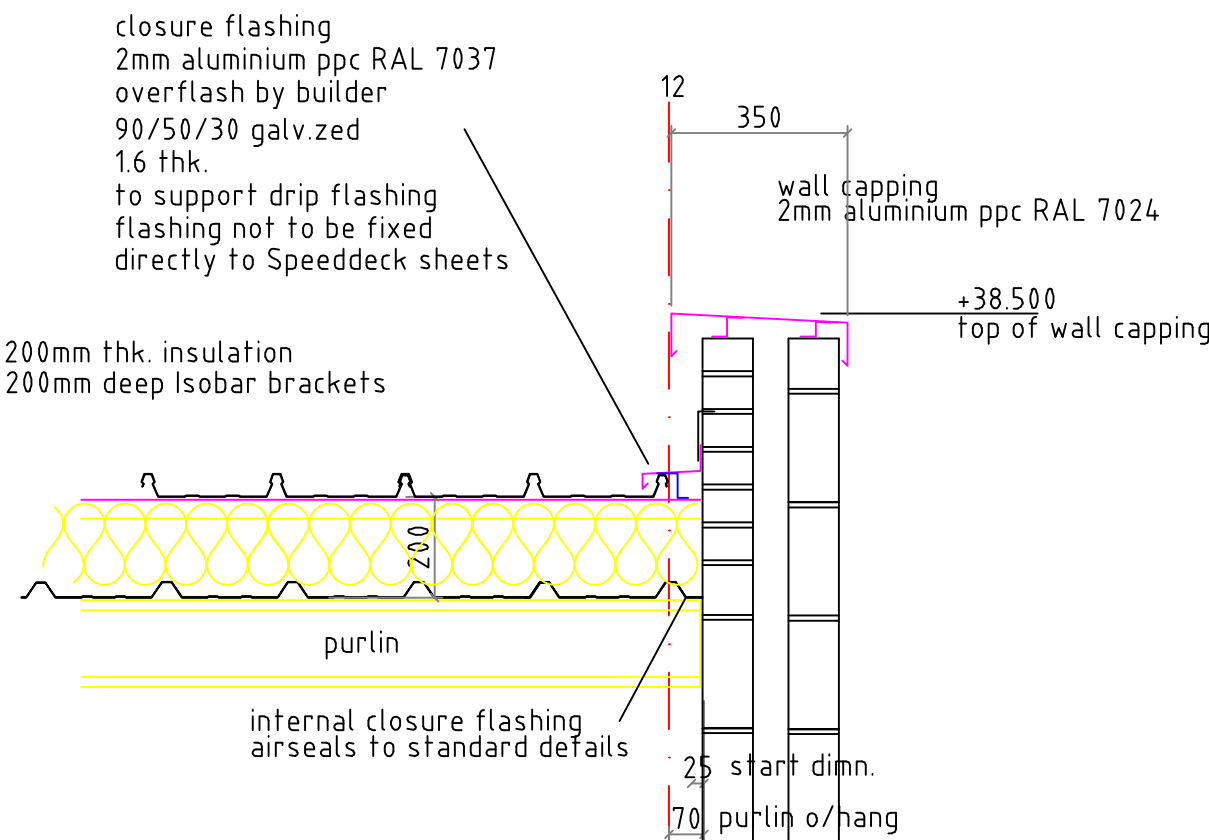
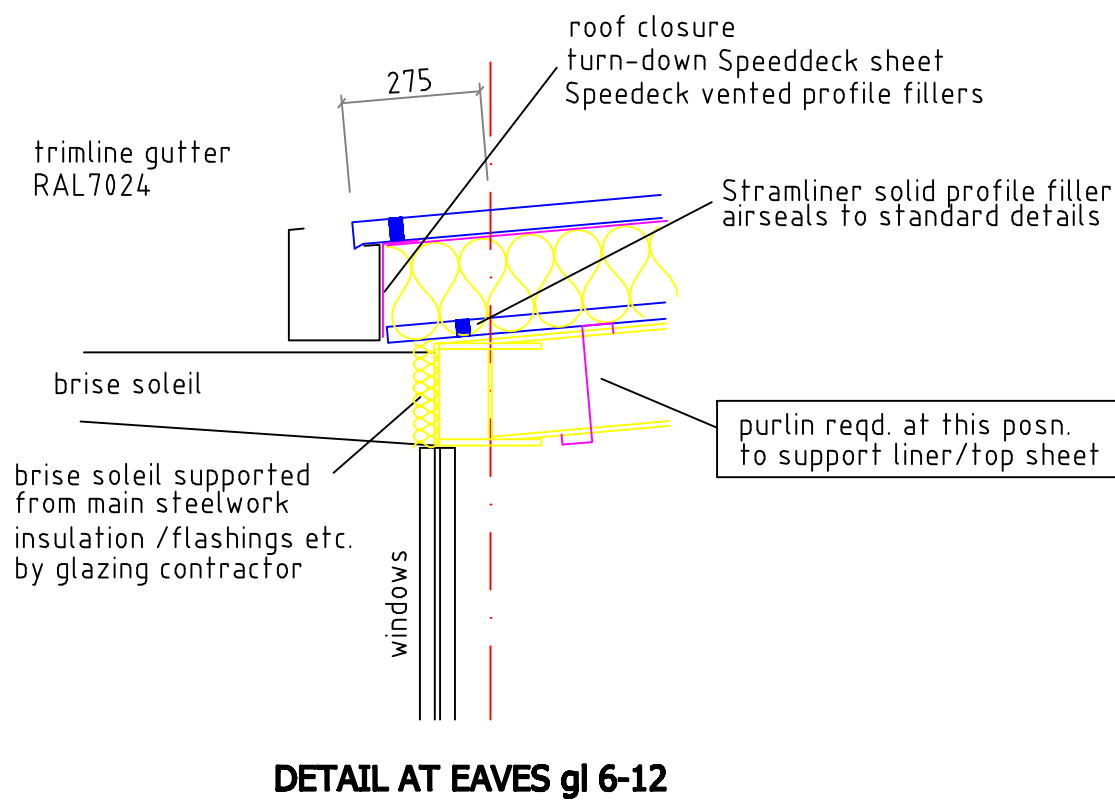
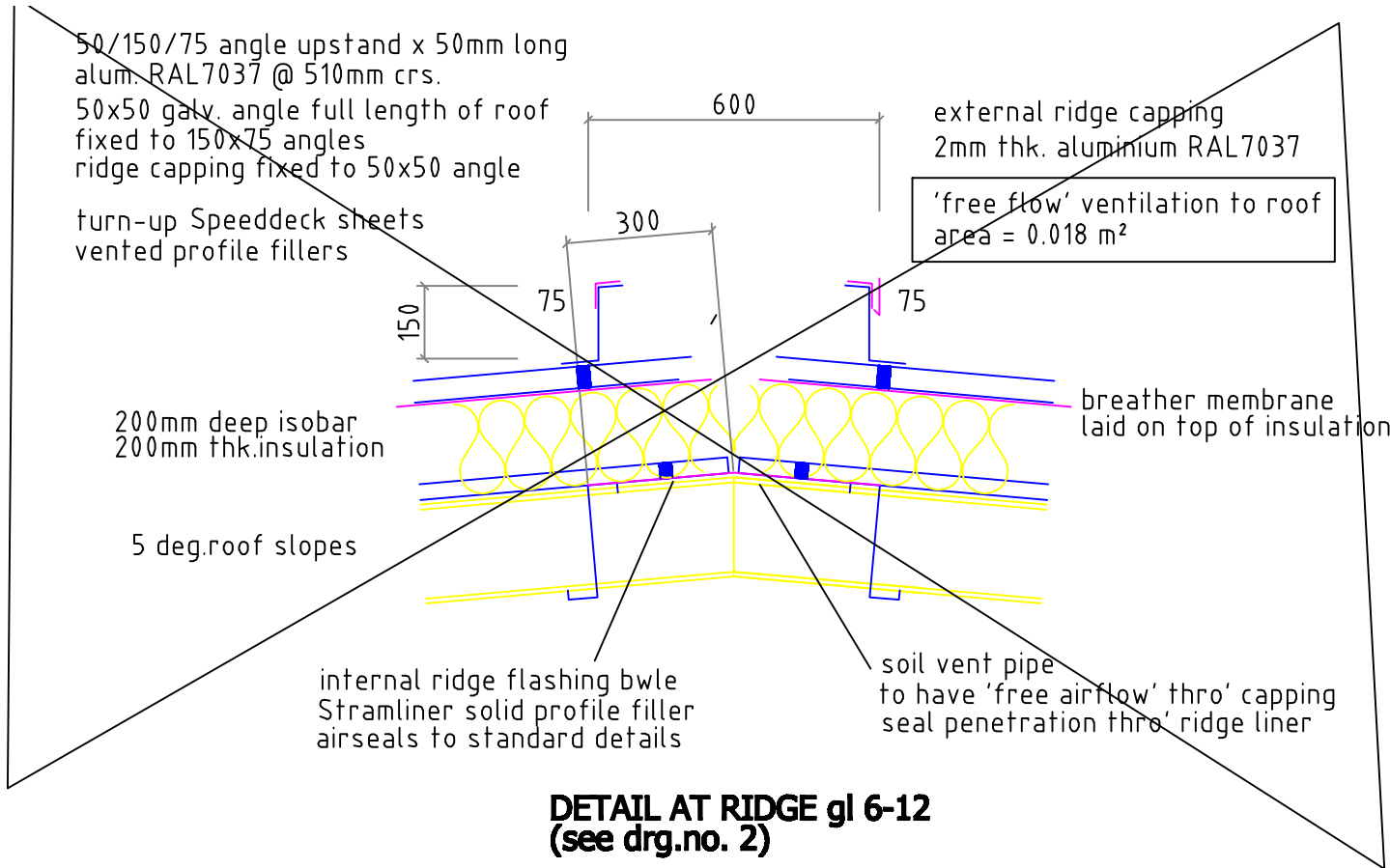


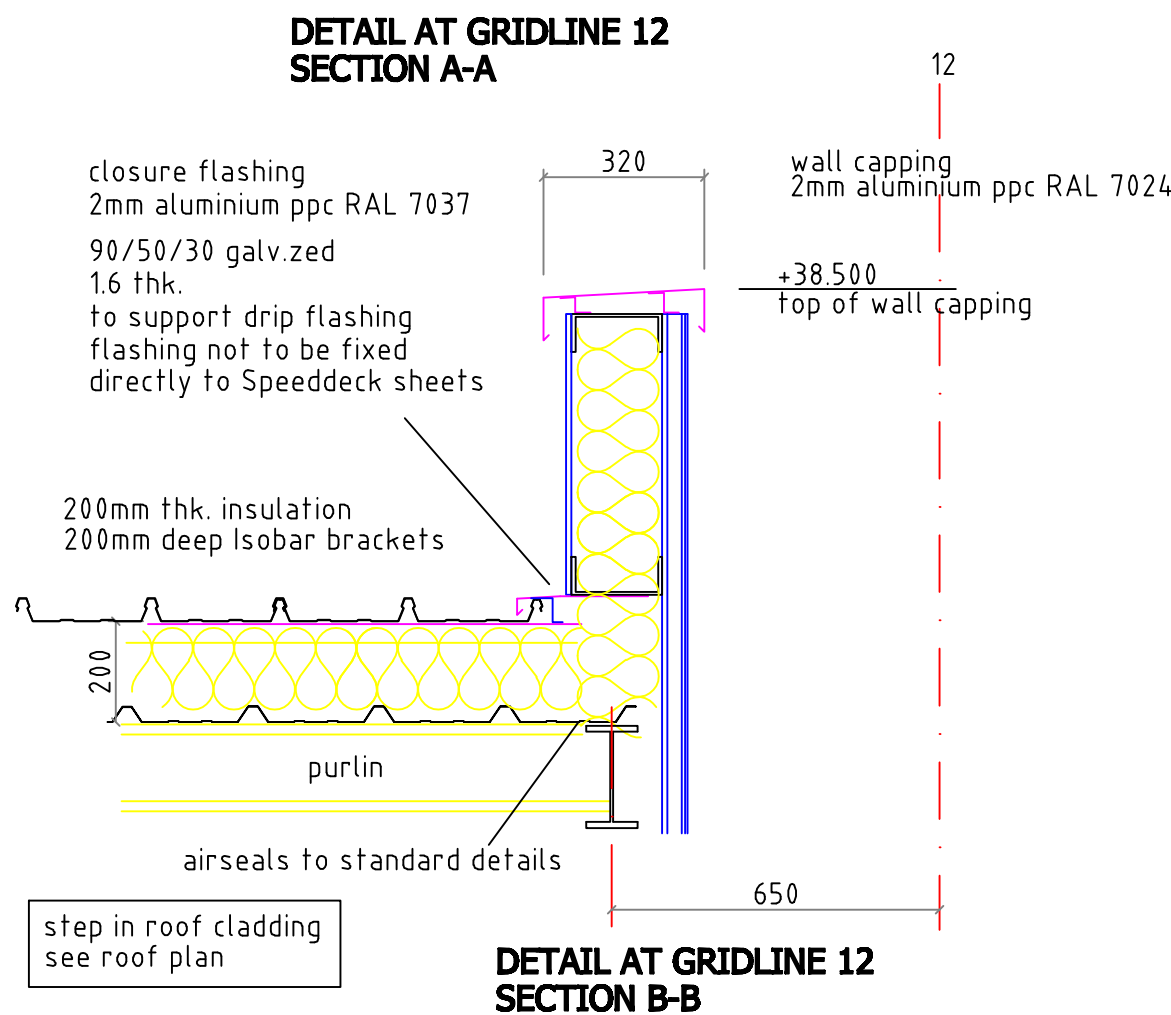
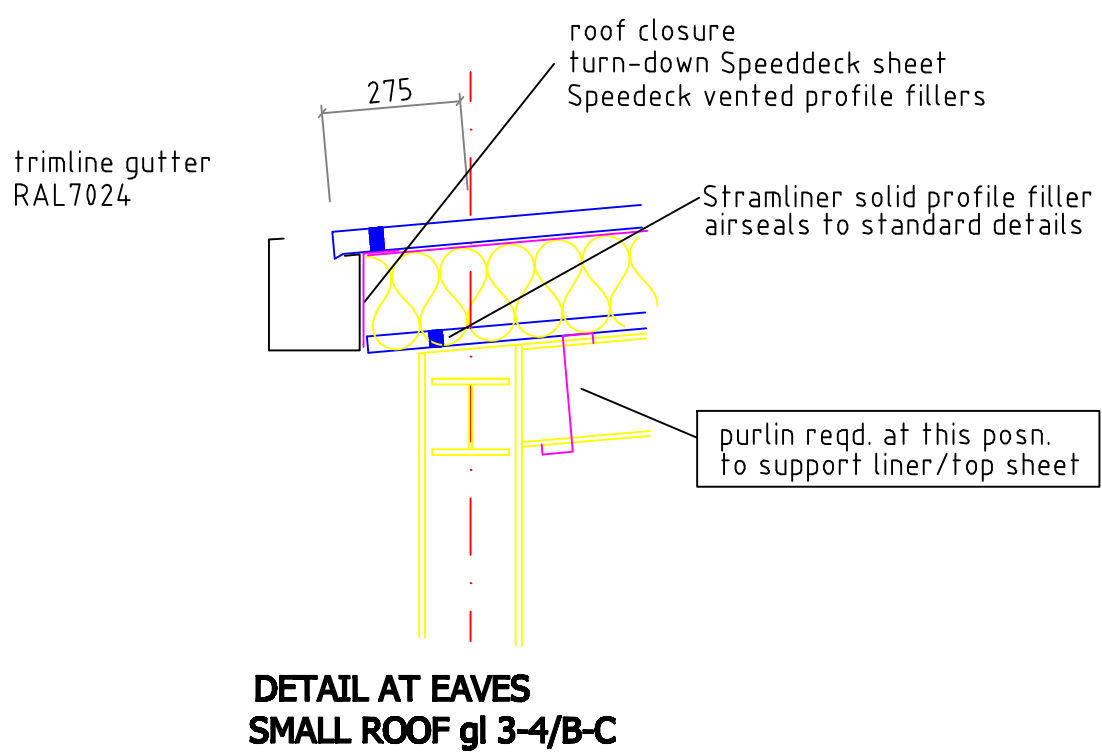
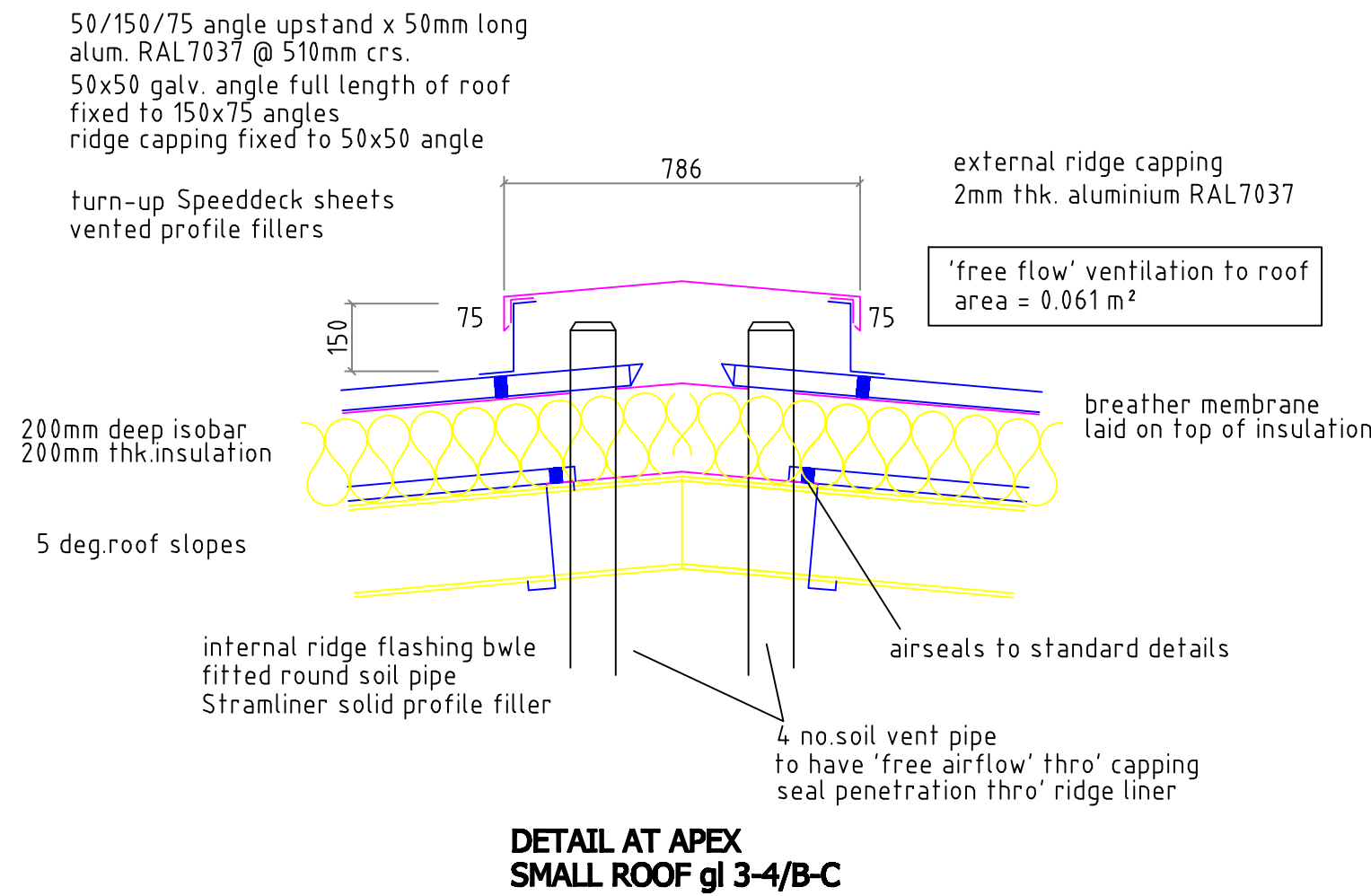
PLAN ON ROOF - BUILDING 20
Speeddeck top sheets
anti-sway brackets on every isobar rail
max.30 metre centres

Note:
sheeter to refer to Speeddeck standard details (supplied)
for reference to airseals etc..



ROOF:
WEATHER SHEET: SPEEDDECK 45mm 0.9 ALUMINIUM - Pv12 RAL7037
LINER PANELS: STRAMLINER 32/1020 WALKABLE 0.7 STEEL (WHITE BWLE) END LAPS MIN 100mm
SIDE LAPS TAPED TO FORM VCL - 50mm WIDE TAPE
AIR SEAL TO ALL INTERNAL CLOSERS - 2 LINES SILICONE BEAD OR EQUAL APPROVED
INSULATION: 200mm Thk. GLASS FIBRE (EDGES CLOSE BUTT JOINTED)
200mm DEEP ASHGRID BRACKETS ANTISWAY BRACKETS ON EVERY ISO-BAR RAIL
STAGGERED AT MAX. 30 METRES CENTRES
BREATHER MEMBRANE LAID OVER INSULATION - SD100 EDGE LAP MIN 150mm AND SEAL WITH TAPE
FILLERS: POLYETHYLENE - COLOUR: OUTER SHEET BLACK, LINER PANEL WHITE
FIXINGS:
STEEL LINER PANELS 3 FIXINGS/TIER/PURLIN - DRILL SCREWS WITH 19 Dia. WASHERS
GUTTERS: TRIMLINE RAL7024
CAPPINGS: 2mm ALUMINIUM ppc RAL7024
RAINWATER PIPES: 100mm SQUARE ALUMINIUM ppc RAL7024

ASHGRID BRACKETS WITH 2 FIXINGS/BACKET - DRILL SCREWS WITHOUT WASHERS
SPEEDDECK CLIPS LOCATED AT EVERY TIER AND EVERY PURLIN - 2 No. FIXINGS/CLIP
SPEEDDECK/SPEEDDECK SIDE LAPS SEALED WITH 9x3 SEALANT



B A	18-3-08 4-3-08	UPDATED TO SUIT COMMENTS (MEETING 17-3-08) UPDATED TO ARCHITECTS COMMENTS				
REV.	DATE	AMENDMENTS			DRAWN	CHKD.
BARRY COLLEN LTD.						
1 COLIN ROAD, SCUNTHORPE, N. LINCOLNSHIRE, DN16 1TT						
Tel. 01724 867817 & 863213				Fax. 01724 280038		
CLIENT						
QUARMBY						
CONTRACT						
WAKEFIELD WATERFRONT						
DRAWING TITLE						
BUILDING 20						
DRAWING No.				SCALE	DRAWN BY	DATE
CO8/1748/1				1:100 1:15	MCW	Feb. '08
REV.	A	B			CHKD. BY	DATE